



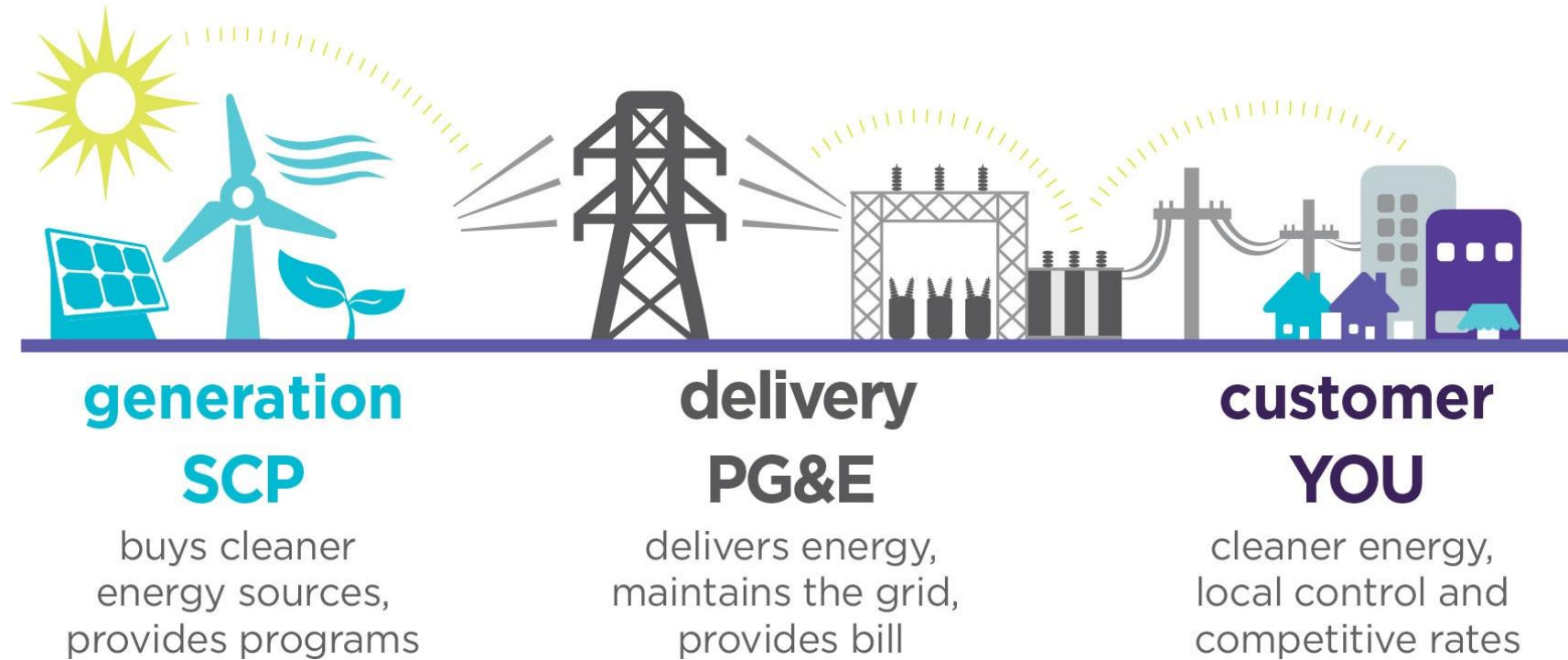
# Rising Back Up

## Achieving Savings and Resilience in Fire Recovery Areas

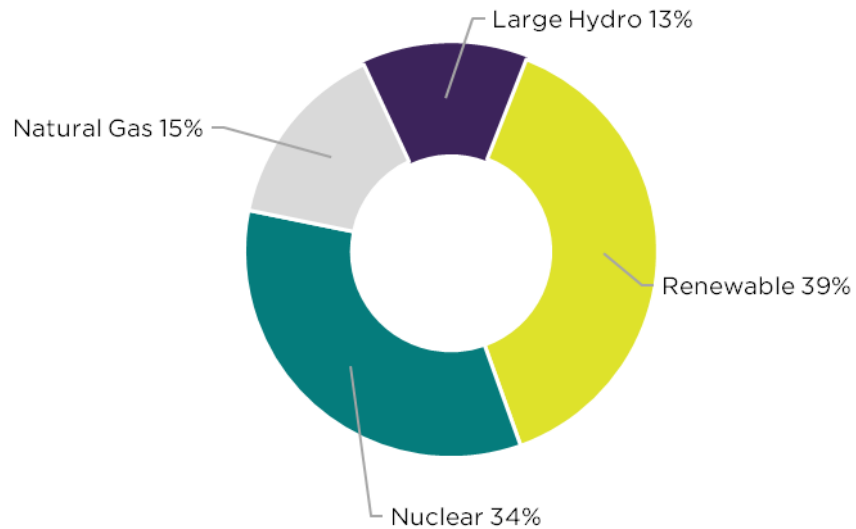
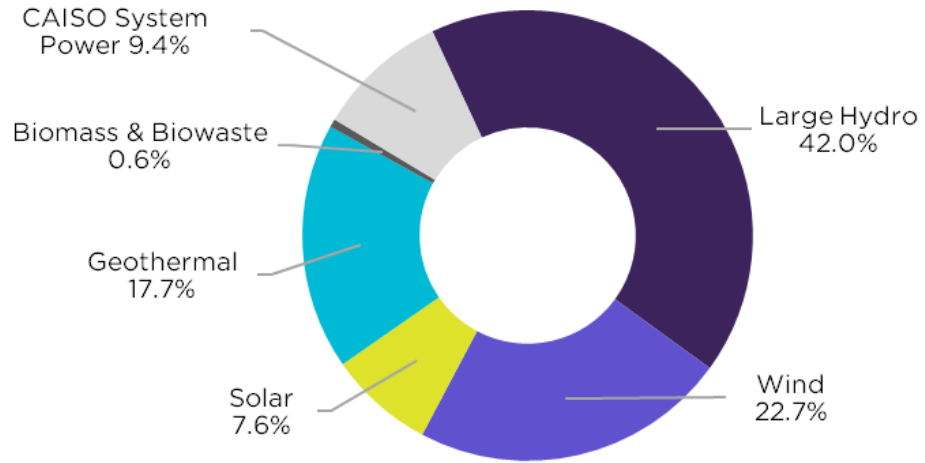
BayREN Regional Forum  
March 18, 2021



# How Community Choice Works



# Service Territory

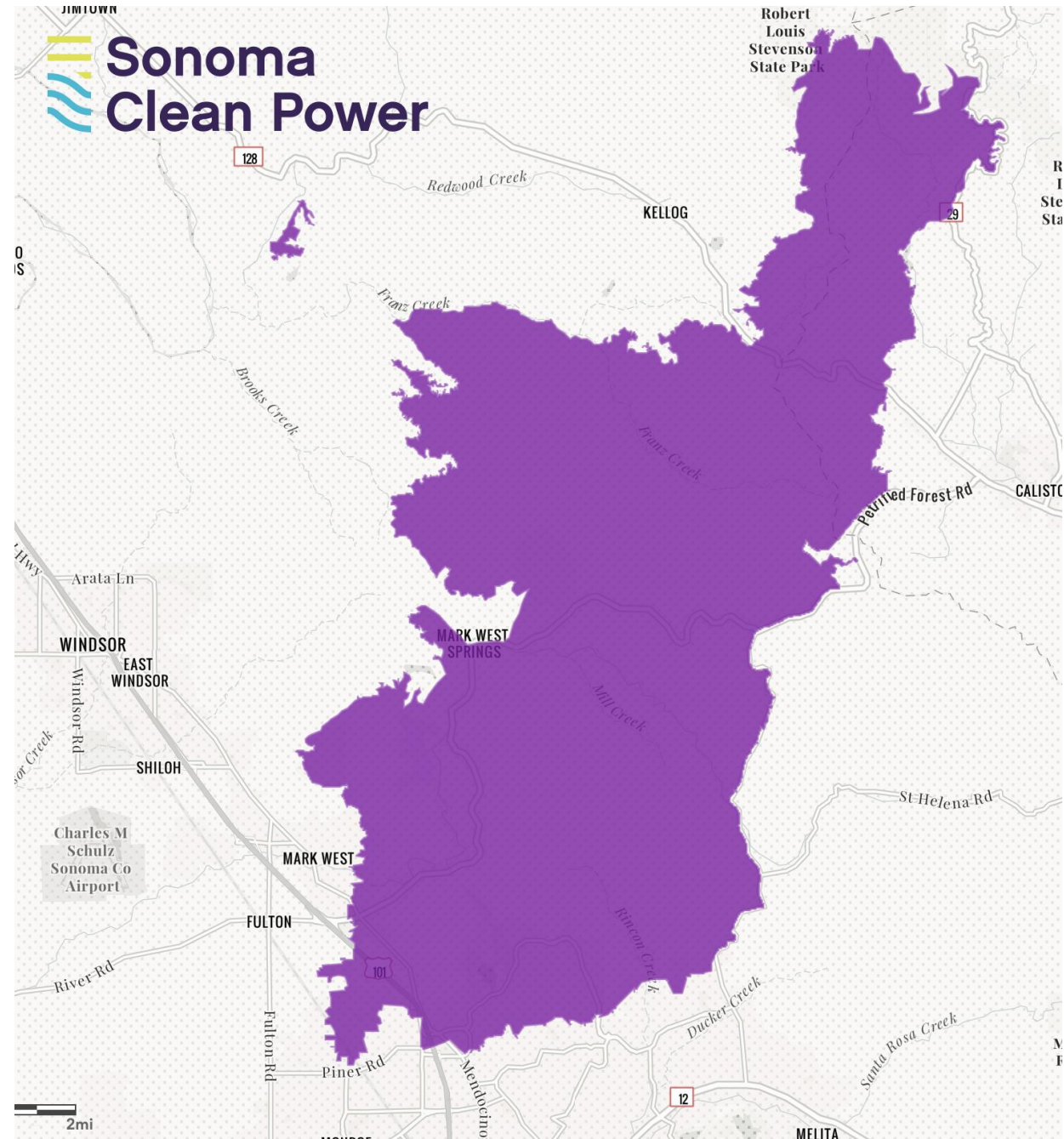


# Tubbs Fire

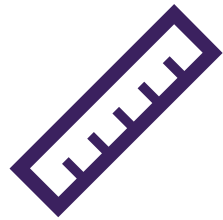
October 2017

36,000 Acres

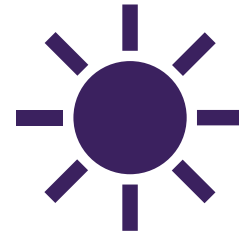
5,800 Homes



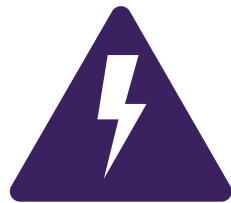
# Advanced Energy Rebuild



**Build  
Better**



**Go Solar**



**Electrify**



**Plug In**



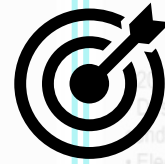
1

Advanced Energy Home

\$7,500

Flexible Performance Path

- 20% above Title 24 energy code
- 220V outlet at stove/range, water heater, and clothes dryer
- Design roof for additional structural loads associated with solar panels, and add conduit for future installation
- Electric Vehicle Charging Station - Equipment free from Sonoma Clean Power



2

All Electric Home

\$12,500

Flexible Performance Path

- 20% above Title 24 energy code, all electric end uses
- Design roof for additional structural loads associated with solar panels, and add conduit for future installation
- Electric Vehicle Charging Station - Equipment free from Sonoma Clean Power



Simple Merit-based Path

\$7,500

- 2016 Title 24 High Performance Walls (note: unvented attic can qualify)
- 2019 Code windows (Max U-factor 0.30, SHGC 0.23)
- High efficiency water heater: Heat Pump Water Heater w/ EF of 3.0+ or gas tankless w/ EF of 0.92 and 220v outlet
- Heating/cooling ducts that are well sealed, insulated (R-8), and located primarily in conditioned space (note: buried ducts as defined by Title 24 can qualify)
- WaterSense efficient plumbing fixtures
- Water efficient landscaping
- Energy Star Appliances
- 220V outlet at stove/range and clothes dryer
- Electric Vehicle Charging Station – Equipment free from Sonoma Clean Power

\*Must meet requirement of CEC Climate Zone 4. See program handbook.



Simple Merit-based Path

\$12,500

- 2016 Title 24 High Performance Walls (note: unvented attic can qualify)
- 2016 Title 24 High Performance Attics\* (note: unvented attic can qualify)
- Insulation Inspected by a HERS Rater
- Building Enclosure Airtightness verified by a HERS Rater (less than 3 ACH50)
- "Cool" Roof
- 2019 Title 24 Windows (Max U-factor 0.30, SHGC 0.23)
- NEEA Tier 3 Heat Pump Water Heater w/ grid-integration controls installed
- High efficiency heat pump for heating/cooling (EER of 12.5+, HSPF of 9.5+)
- Heating/cooling ducts that are well sealed, insulated (R-8), and located primarily in conditioned space (note: buried ducts as defined by Title 24 can qualify)
- Smart Thermostat
- WaterSense efficient plumbing fixtures
- Water efficient landscaping
- Induction Cooking
- Energy Star Appliances for all Refrigerators, Dishwashers, Clothes Washers, and Bathroom Fans
- Heat Pump or Electric Clothes Dryer
- Electric Vehicle Charging Station – Equipment free from Sonoma Clean Power

\*Must meet requirement of CEC Climate Zone 4. See program handbook.



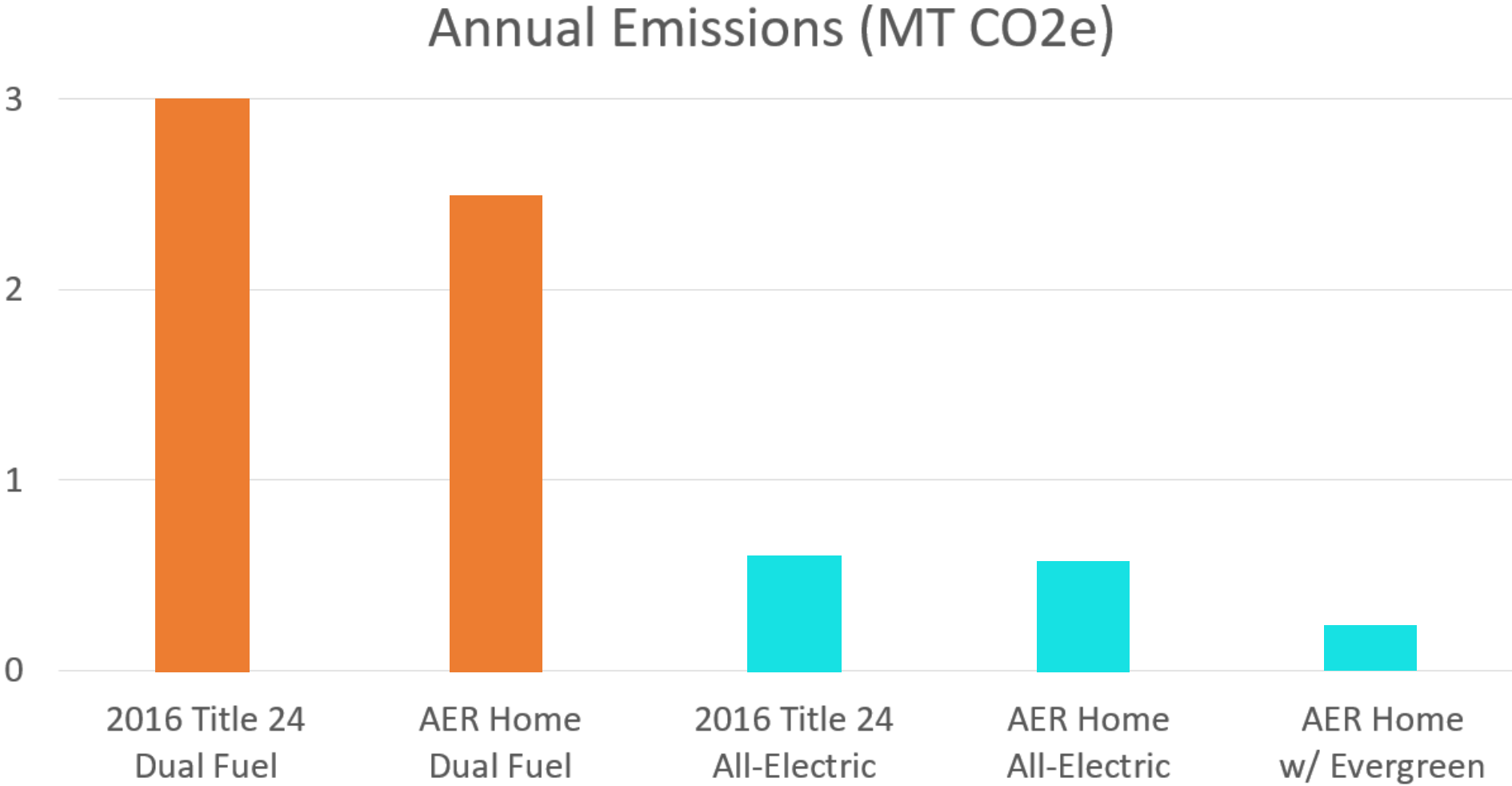
Add solar plus battery to either option

\$5,000

- Solar panel system designed to offset annual electric usage with 7.5 kWh battery storage
- Pre-purchase of 20-year premium on 100% local renewable power (e.g., EverGreen).



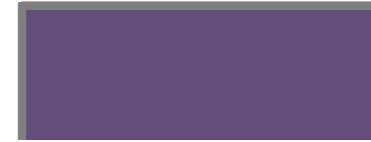
# Impact of Electrification



Customer Facing



Battery Bonus  
\$5,000 \*



# Sonoma Clean Power

\$750(



Dual Fuel



All-Electric

\* 50% for ADUs  
and multi-family





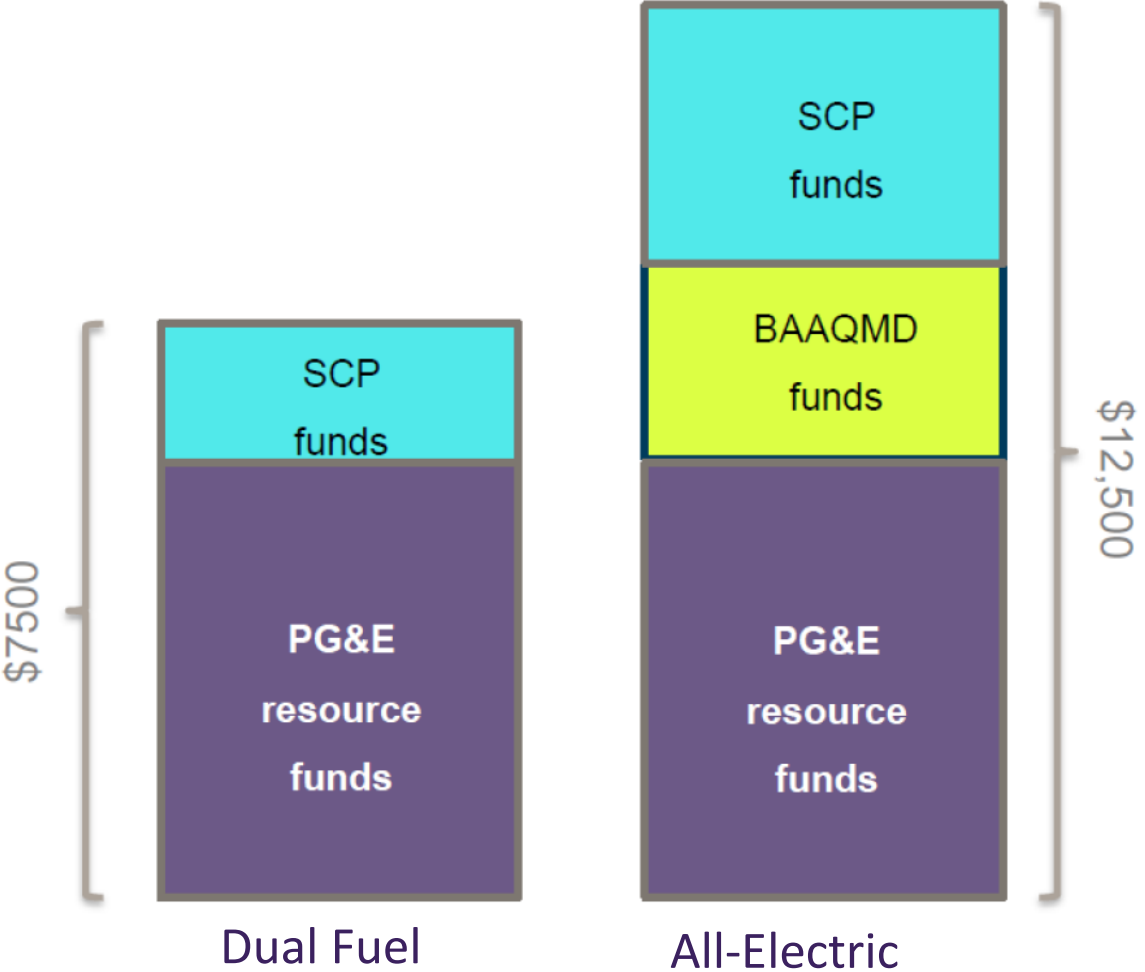
# Behind the Scenes



Battery Bonus  
\$5,000

- Remaining tab: \$X

- Varies depending on EDR



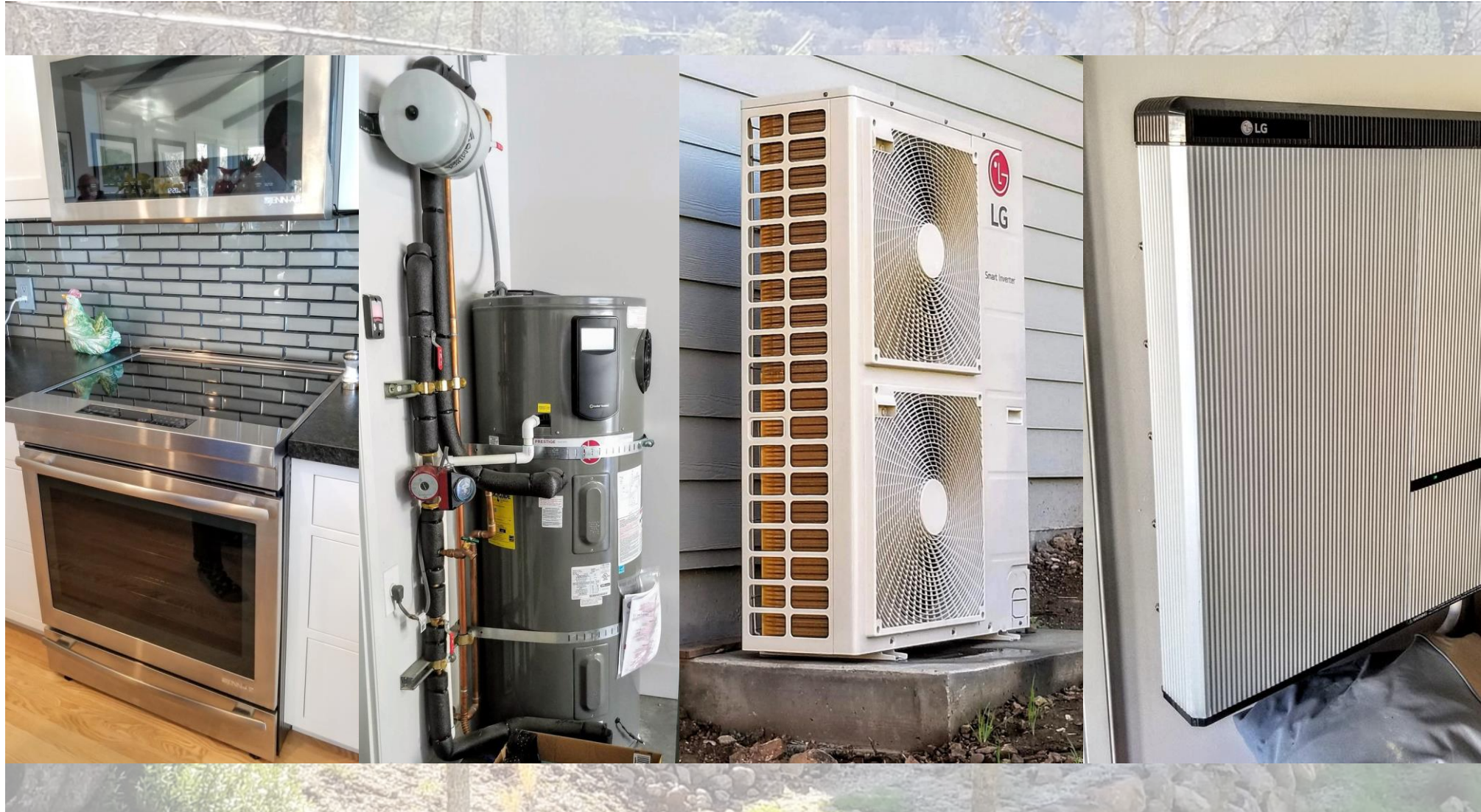
- Remaining tab: \$X

- HPWH: \$1,000
- HP HVAC: \$1,500
- Solar PV: \$3,000

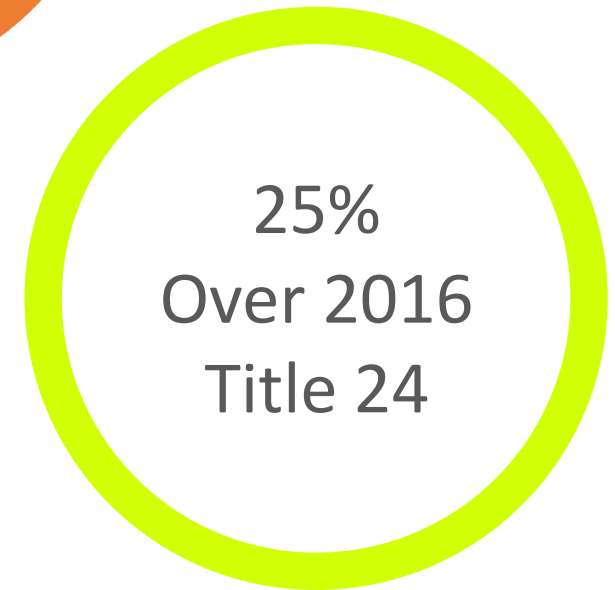
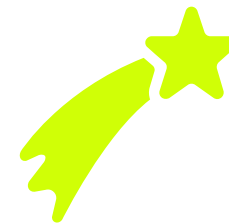
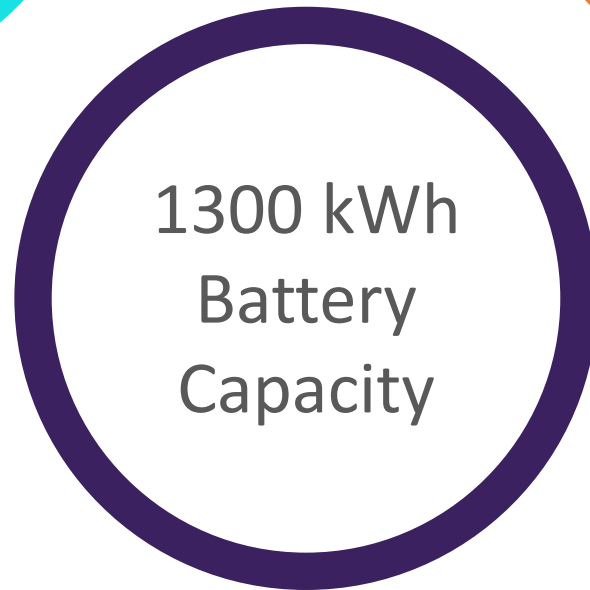
- Varies depending on EDR



# Case Study



# Participation Numbers



# Reach Codes



# Advanced Energy Build



**\$2.2M**

## Market Rate

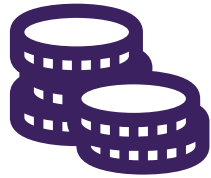
Project Type	Rebate	Battery Bonus
Dual Fuel	\$1,000	\$1,000
All-Electric	\$3,500	\$1,000

## Affordable Homes

Project Type	Rebate	Battery Bonus
Single Family	\$5,000	\$5,000
Multifamily	\$2,500	Up to \$25,000



# Best Practices



**Dress in  
Layers**



**Partner Up**



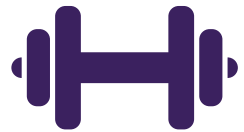
**Use One  
Voice**



**Keep It Local**



# Lessons Learned



**E for Effort**



**Electrify  
Everything!**  
(except that)



**Directions  
Please**

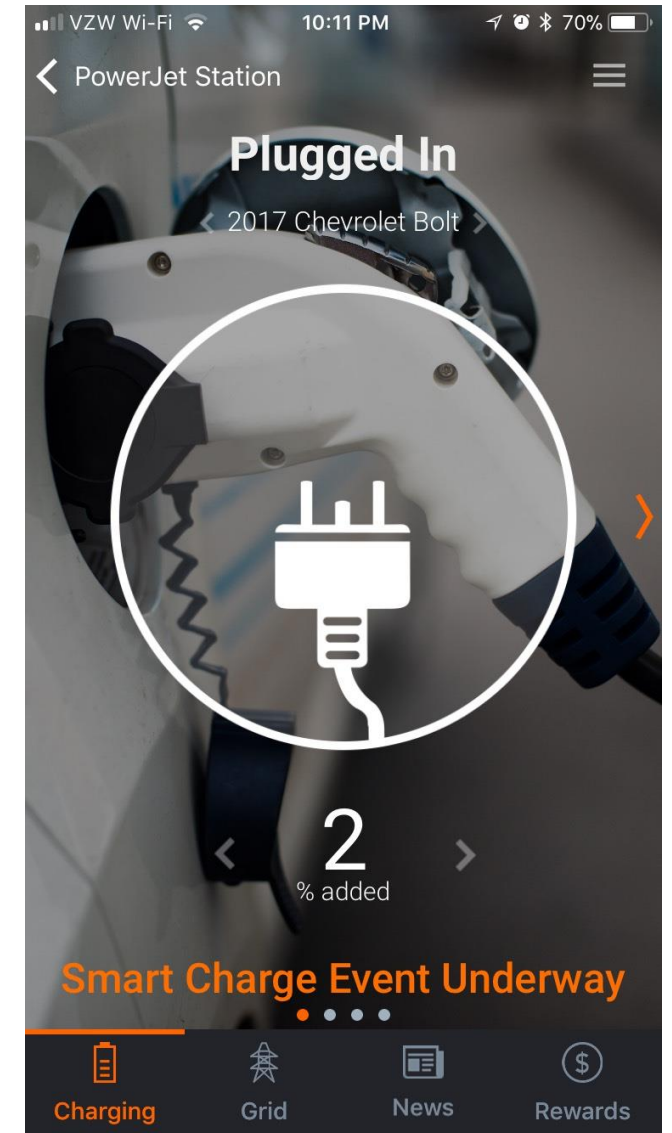


**Math is Hard**



# GridSavvy

- **Shape Sonoma Clean Power loads** (customer usage) to match supply (procured energy sources).
- Use as a resource to **displace gas powered plants**.
- Get customers excited about demand-response capable technologies, and pay them for their contribution to making a cleaner grid.



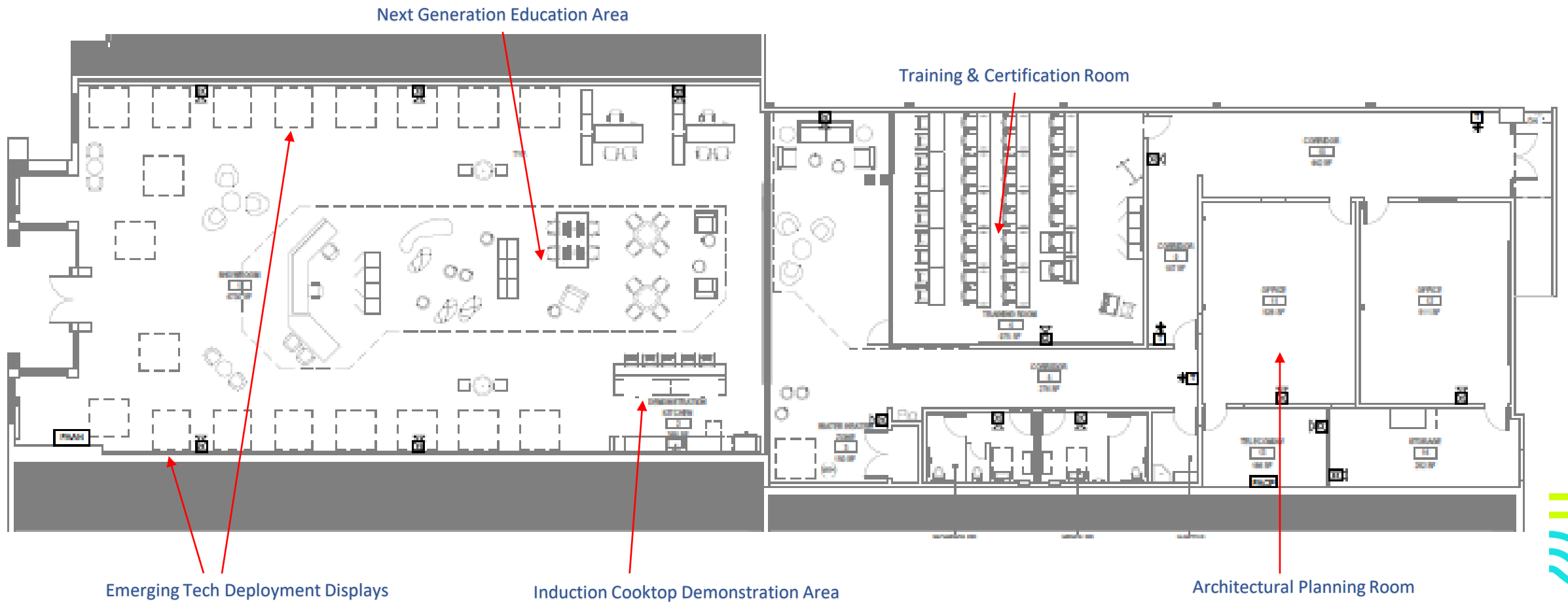


# The Advanced Energy Center



# The Advanced Energy Center





# Insulated Concrete Forms



- High R-value
- Fire resistance
- Sound-proofing





# Thank you

SCOTT SALYER

PROGRAM MANAGER

[SSALYER@SONOMACLEANPOWER.ORG](mailto:ssalyer@sonomacleanpower.org)

